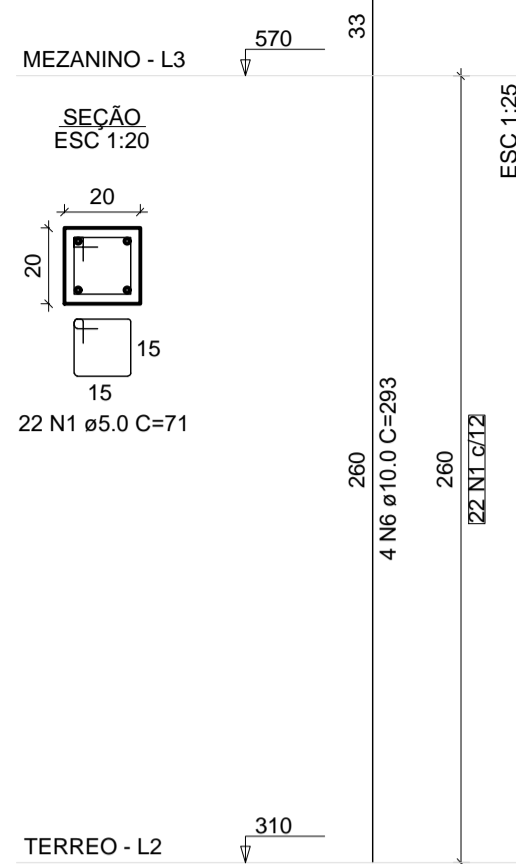
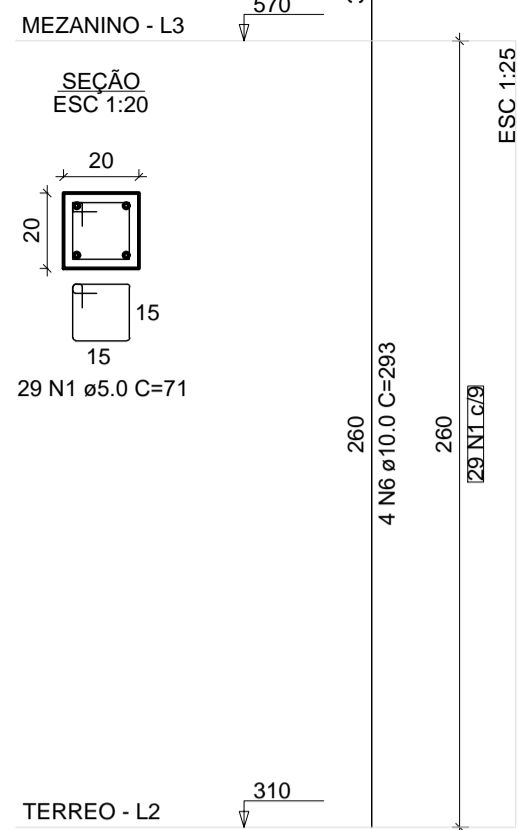


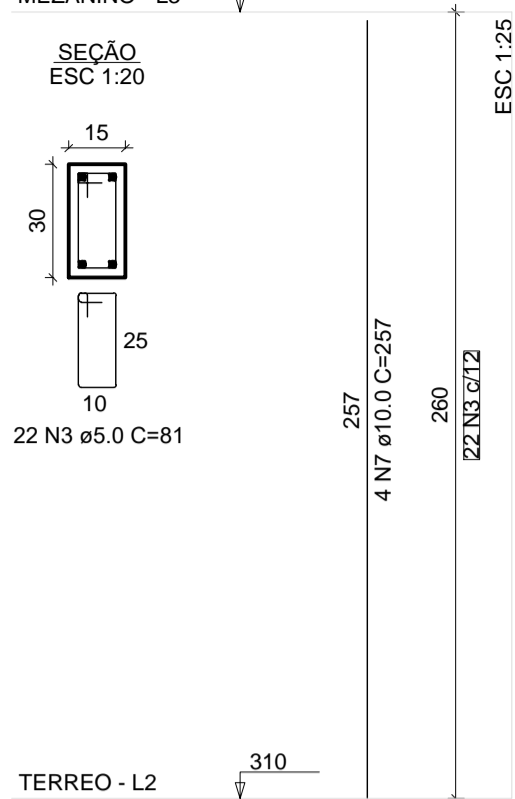
P11=P12=P13=P14=P15=
=P17=P18=P19=P20=
=P21=P22=P23



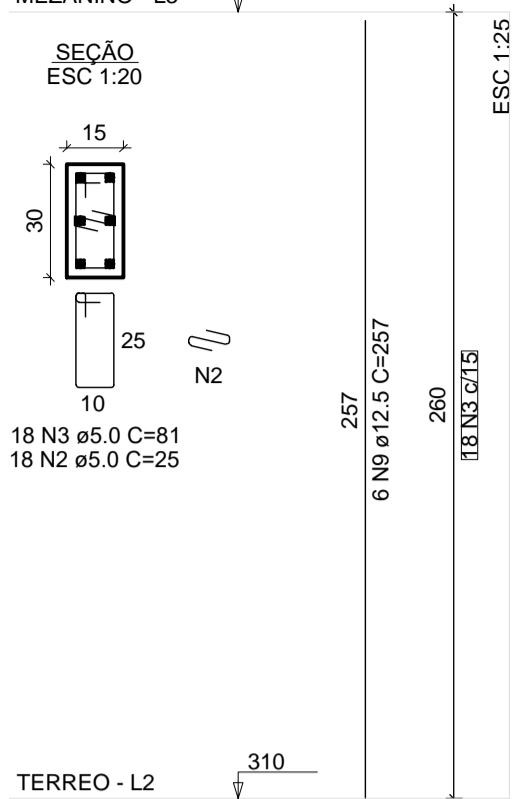
P16



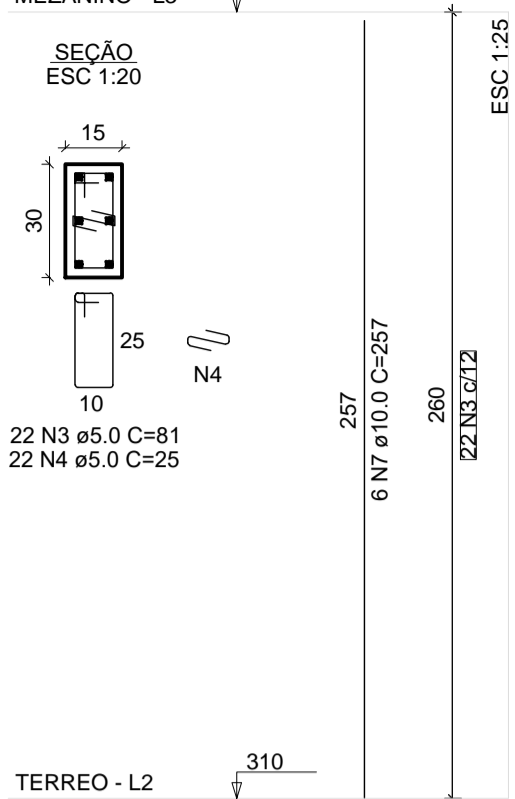
P24



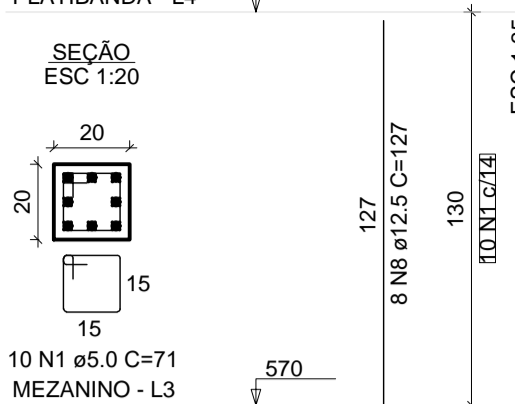
P25



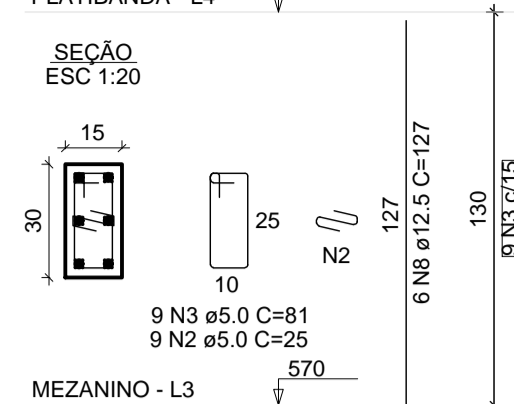
P27



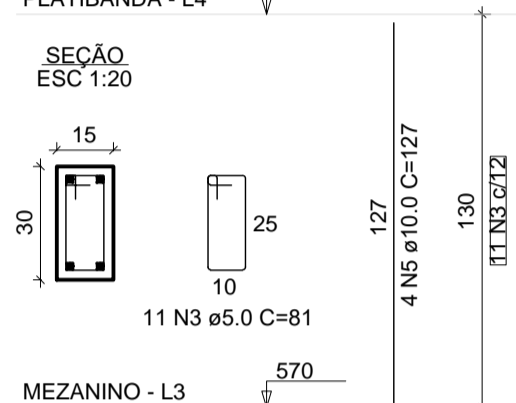
P1=P7



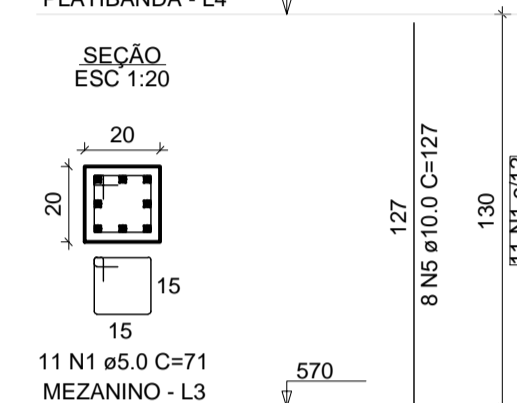
P2



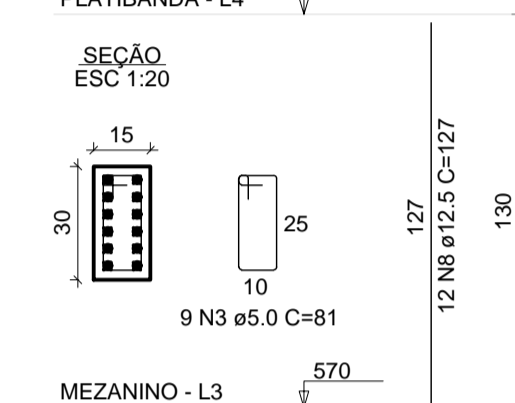
P3



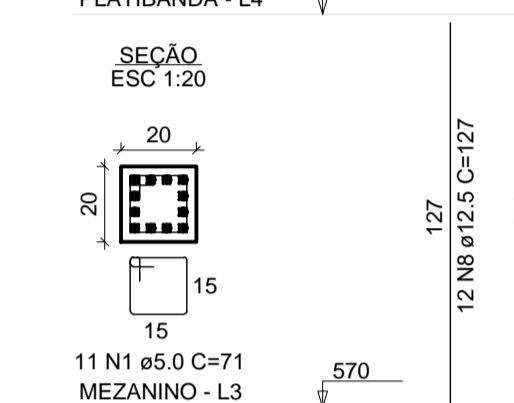
P4



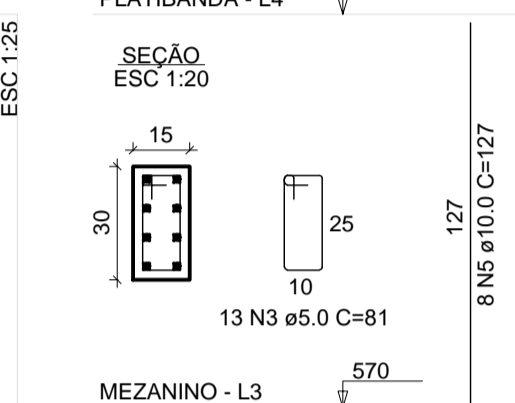
P5



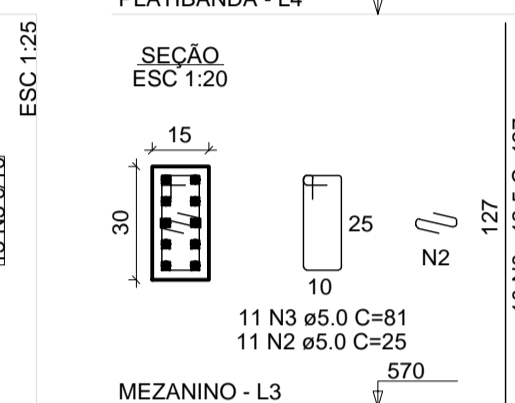
P6



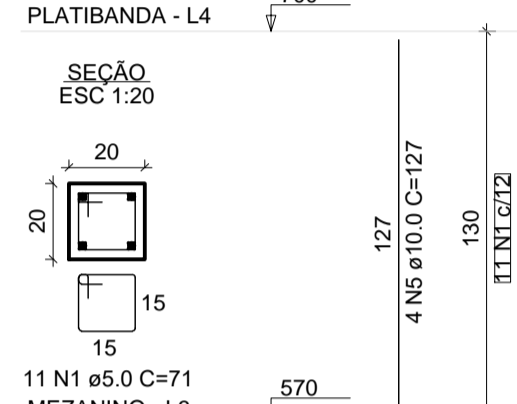
P8



P9



P10=P11=P12=P13=P14=
=P15=P16=P17=P18=P19=
=P20=P21=P22=P23



RELAÇÃO DO AÇO PILARES

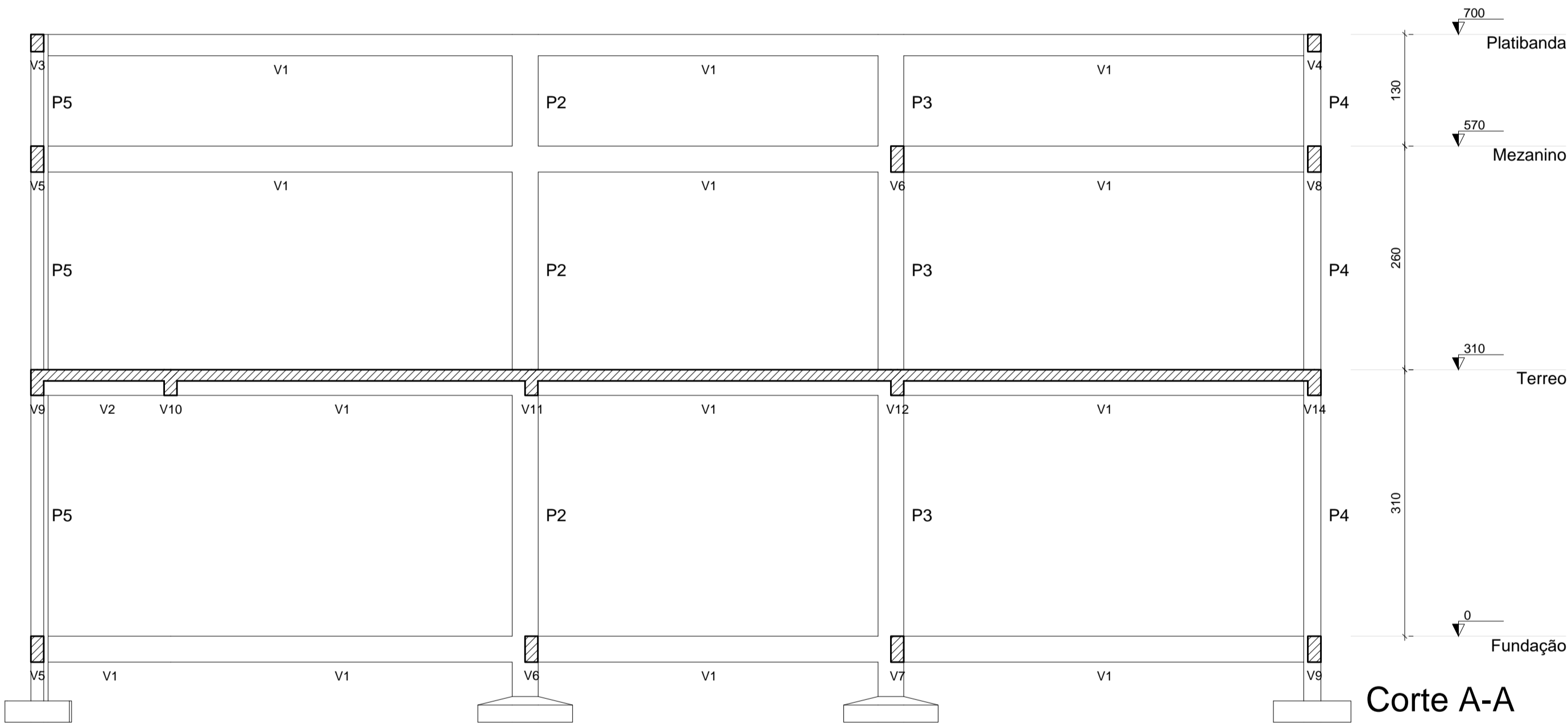
AÇO	N	DIAM (mm)	QUANT	C.UNIT (cm)	C.TOTAL (cm)
CA60	1	5.0	489	71	34719
	2	5.0	38	25	950
	3	5.0	115	81	9315
	4	5.0	22	25	550
	5	10.0	76	127	9652
	6	10.0	52	293	15236
	7	10.0	10	257	2570
	8	12.5	56	127	7112
	9	12.5	6	257	1542

RESUMO DO AÇO

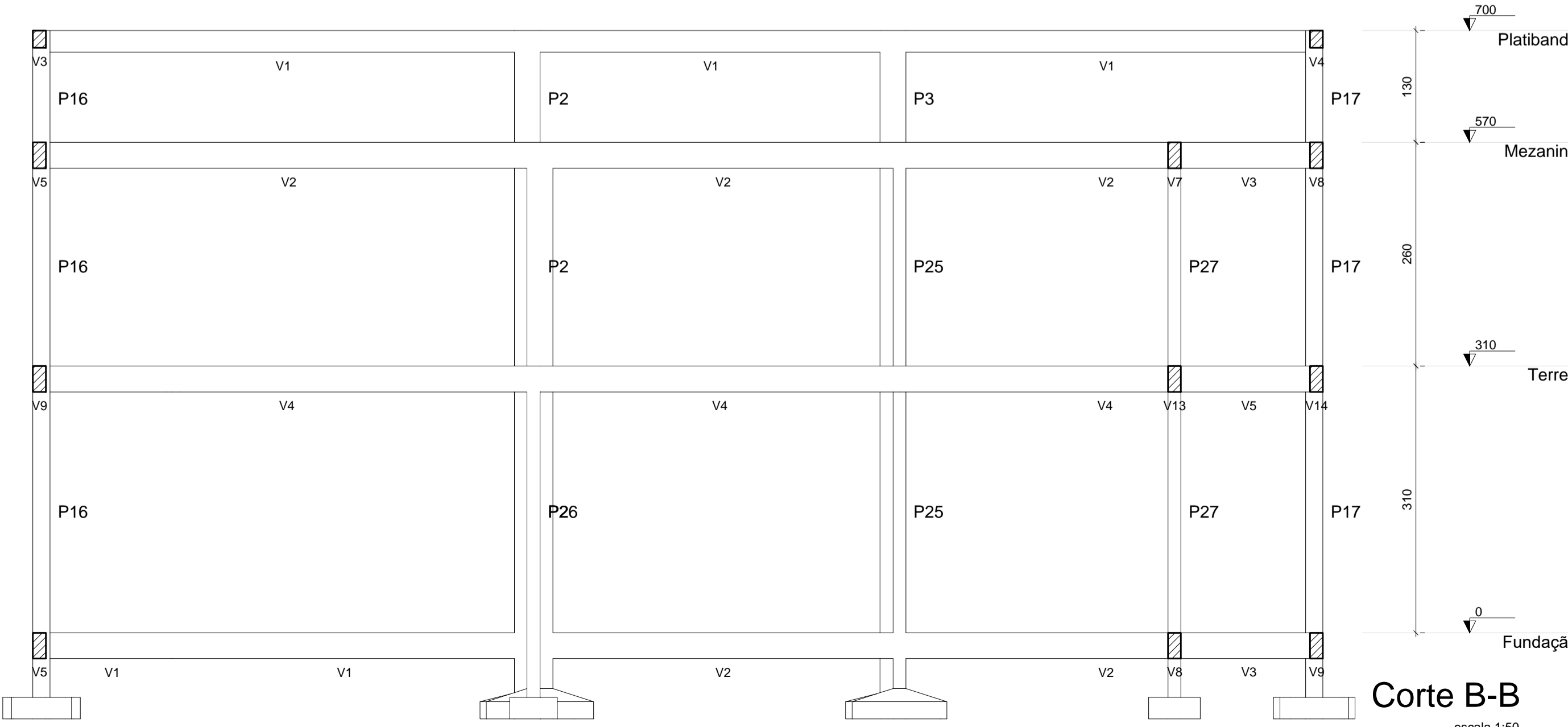
AÇO	DIAM (mm)	C.TOTAL (m)	PESO + 10% (kg)
CA50	10.0	274.6	186.2
CA60	12.5	86.5	91.7

PESO TOTAL (kg)
CA50 277.9
CA60 77.2

Volume de concreto (C-30) = 2.93 m³
Área de forma = 58.63 m²



Corte A-A
escala 1:50



Corte B-B
escala 1:50

Aprovação:

PREFEITURA MUNICIPAL DE ARAPIRACA
DEPARTAMENTO DE PROJETOS
APROVADO EM
26/07/2021
Valdir de Sales Junior
Eng. Civil
CREA/AL Nº 0085374-0

 **PREFEITURA MUNICIPAL DE ARAPIRACA**
Secretaria Municipal de Infraestrutura

PROJETO ESTRUTURAL

Título/ Obra:
UNIDADE DE COMERCIALIZAÇÃO DA AGRICULTURA FAMILIAR E ECONOMICA SOLIDÁRIA

Localização:
Rua Teodorico Costa, Centro Arapiraca - AL

Proprietário/ Responsável:
**Prefeitura Municipal de Arapiraca / CNPJ: 12198693/ 0001-58
Marcus Vinicius Nunes Silva
Engenheiro
MARCUS VINICIUS NUNES SILVA CREA 0216086124**

Dados do Projeto:
CT: 1068387-68/2019

Assunto:
DETALHE DOS PILARES E CORTES

Atenção: Conferir as Medidas no Local

Desenho: Gráfico - SEMINFRA
Data: MAR/ 2020
Escala: Indicada

Prancha Nº:
06/10